

# PICTOR<sup>★</sup>

Imaging  
Unlimited



# IMAGING UNLIMITED

---

Volk Pictor is a truly portable digital imaging device that provides a variety of imaging capabilities with interchangeable modules. This versatile hand held device is available with the option of four key imaging modules for examination: ophthalmic - posterior and anterior segment, dermatoscopic and otoscopic.

## IMPROVED PATIENT CARE

---

Digital still and video images created with Pictor provide accurate first diagnosis and planning for consistent follow up treatment.



## SIMPLE INTEGRATION

---

Pictor is easily adopted into daily examination routines. Connecting to any patient database system providing standard jpeg image files enables fluent image data storage and sharing that may be used for consultation purposes.

## MAXIMUM PORTABILITY

---

Lightweight and portable, Pictor is easily used in field conditions outside the office to examine convalescing patients and for geriatric or pediatric care. It also has an adapter to mount to a slit lamp if needed.



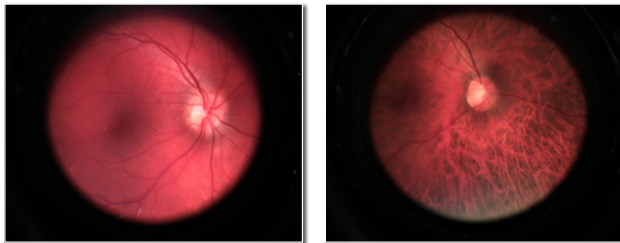
PICTOR 

## SUPERIOR VERSATILITY

Two easily interchangeable modules provide high resolution retinal (non-mydratic) or external eye imaging. Two further modules for otoscopic and dermatoscopic examination.

### RETINAL MODULE

Pictor retinal imaging enables non-mydratic eye fundus examination with a 45° field of view. With digital still and video images, the appearance of optic disc, macula and retinal vasculature can be screened and documented for ocular lesions and anomalies.



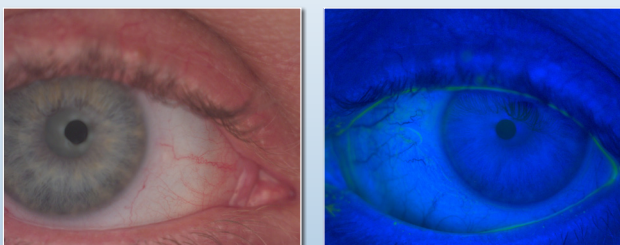
#### FEATURES

- Reflection free imaging with ten illumination levels
- Image targeting and capture using infrared or white light
- Not necessary to dilate pupils (minimum pupil size 3.5mm)
- Automatic focusing
- Silicone rubber eye cup for support and comfort
- Image resolution 1920 x 1440 pixels
- Diopter compensation -20D to + 20D



### ANTERIOR MODULE

Pictor anterior imaging provides high resolution digital image data of the surface of the eye and areas directly surrounding the eye. The cobalt blue LED light allows fluorescent imaging to detect a dry eye or any cuts or rashes on the surface of the eye.



#### FEATURES

- White and blue LED light for image targeting and capture
- Silicone rubber eye cup for support and comfort
- Autofocus and optional manual adjustment
- 6x digital zoom
- Image resolution 2560 x 1920 pixels

# TECHNICAL SPECIFICATIONS

## Handset Technical Specifications

- Dimensions – 3.2" (w) x 6.5" (h) x 2.6" (d) (82 x 166 x 66mm)
- Weight – 0.9 lb (400 g)
- Power Supply – rechargeable Ni-MH battery
- Slit lamp adapter for fixed image capture

## Handset Features

- Display - 2.4" TFT-LCD, antireflective coating
- Image memory size - 2 GB SD memory card
- Bayonet connector for optics modules attachment
- Integrated lens for general imaging (without module)
- Average usage time 1hr 30 minutes continuous use

## Imaging

- Image Sensor – CMOS 5.0 megapixel
- Image format - JPEG
- Video format - MPEG-4 and MPEG-1
- Resolution in general mode – 2560 x 1920 pixels
- Automatic focusing

## Connectivity

- Computer with USB port – no driver installation needed
- Patient data management software provided with sales package

## User Interface Features

- Patient folders
- Image preview



# PICTOR<sup>☆</sup>



- › MAXIMUM PORTABILITY
- › SIMPLE INTEGRATION
- › IMPROVED PATIENT CARE



A HALMA COMPANY

**HS**  
**Optikmaschinen**

Handwerkerstraße 14  
48720 Rosendahl-Holtwick

Tel: 02566/4720

Fax: 02566/1620

Email: [hsoptikmaschinen@hotmail.com](mailto:hsoptikmaschinen@hotmail.com)

[www.hs-optikmaschinen.de](http://www.hs-optikmaschinen.de)

ML-1009  
Copyright © Volk Optical Inc.  
Rev. May 23, 2011